

Inland Geological Society

March 2020

Next Meeting:
Tuesday, March 10th

Time:
Social: 6:00pm
Dinner and
Presentation:
7:00pm

Location:
Riverside City College
(Bradshaw Building)
4800 Magnolia Ave.
Map: page 5

Coming to
Dinner?
Please RSVP
by March 8th to:

rsvp.igs@gmail.com

Cost:
Members: \$20
Non-Members: \$25
Students: \$10

Parking: \$5

Newsletter of the Inland Geological Society

Volume 36 No. 2

In this issue:

- March Speaker: Laurie Racca, PG 1
- Announcements / Upcoming Events 2
- IGS Meeting Schedule 4
- Meeting Location & Current IGS Officers 5

Joint Meeting with GRA

March Speaker:

Laurie Racca, PG

Senior Registrar, Geology & Geophysics

Board for Professional Engineers, Land Surveyors, and Geologists (BPELSG)

Modern geophysical methods provide standalone data or supplemental data for the interpretation of geologic, buried infrastructure, and/or structural conditions.

2020 Updates:

Understanding Geology & Geophysics Licensure Requirements in California

On August 1, 1968, Governor Ronald Reagan signed Assembly Bill 600 into law, creating the State Board of Registration for Geologists, and regulating the geologic profession in California. The legislation was driven by consumer demand for services to address geologic hazards, especially landslides in the southern part of the State. Unqualified persons performing questionable geologic work combined with a patchwork of local licensing requirements eventually resulted in the passage of The Geologist Act. In 2019, the Board promulgated a regulation to clarify the requirements for geology and geophysics licensure in California. This presentation will include a review of fundamental licensing concepts, and provide an overview of the specific qualification requirements for the GIT, PG, PGP, CEG and CHG. This will include a discussion of the recent updates to the regulations regarding education requirements and how to properly document qualifying work experience. Understanding this information is important for early career professionals seeking licensure, and for licensed professionals who want to help their staff become licensed.

Biography:

Laurie Racca, PG, is a licensed Professional Geologist with 25+ years of experience specializing in complex environmental site investigations and leading multidisciplinary teams. Her experience includes working in private environmental and geotechnical consulting, providing regulatory agency oversight large military and civilian environmental cleanups for the Department of Toxic Substances Control, and investigating fraud, waste and abuse as part of the Office of Enforcement at the State Water Resources Control Board. She was appointed as the Senior Registrar for Geology and Geophysics by BPELSG in June 2015.

ANNOUNCEMENTS AND EVENTS:

Plan ahead for the **Geological Society of Nevada's** 2020 Symposium, *Vision for Discovery: Geology and Ore Deposits of the Basin and Range*, scheduled for May 12-24, 2020, at the Nugget Casino Resort in Sparks, Nevada. Abstract submittal will open soon! For more information, visit the organization's website at <http://www.gsnv.org/2020-symposium/>.

COGGE Webinar Series

[Dr. W. Allen Marr](#)

The recording and slides from COGGE's popular September 5th webinar:

Geotechnical Aspects of Tailings Dams & their Failures



Geotechnical Aspects of Tailings Dams and their Failures, presented by Dr. W. Allen Marr are available on line:

- Access the recording: <https://www.youtube.com/watch?v=gmAok-GDaOs>
- Access the slides: <https://tinyurl.com/Marr-Slides>

This and past webinars are also available on the COGGE Events page at: <http://dels.nas.edu/global/besr/COGGE-Events>

Check out the IGS Facebook Page at
<https://www.facebook.com/groups/InlandGeo/>

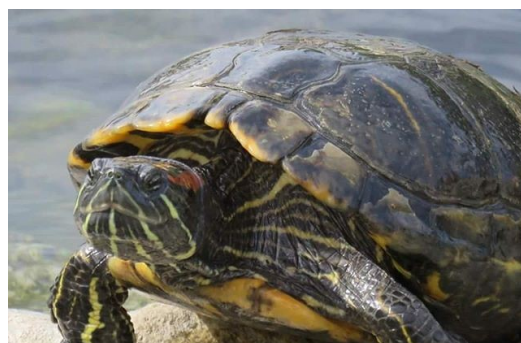
Visit the
Jurupa Mountains Discovery Center
7621 Granite Hill Drive, Jurupa Valley, California 92509
951.685.5818

The Jurupa Mountains Discovery Center hosts the Ruth and Sam Kirkby Earth Science Museum, which houses a unique collection of exhibits including the Crestmore Quarry, fluorescent minerals, Indian artifacts, mining exhibits, petrified wood, sea shells, dinosaur exhibits, fossils, rocks and minerals, and many more.

The onsite Granite Hill Nursery stocks a large variety of cacti and succulents, and the gardens showcase mature and unique species over several acres. A collection of butterfly gardens is under construction as part of ongoing Eagle Scout Service Projects. The Center also provides hands-on educational kits for educators, houses a critter corner in the gift shop, and hosts themed toddler times on Friday afternoons.

The Center is always looking for volunteers to assist in the many on-going activities from light construction work to assisting with tours and programs. This is a worthwhile and fulfilling opportunity for scientifically-minded individuals of all ranks, from students through working professionals to retirees. This service will look great on your resume! Please contact Executive Director Wes Andree at 951/685-5818 or director@jmdc.org for further details.

Visit the website at <https://jmdc.org> to learn more about the Jurupa Mountains Discovery Center!



Upcoming Meetings/Events

Inland Geological Society

In 2020, the Inland Geological Society will meet the first Tuesday or Wednesday of each month. For more information, visit our website at www.inlandgeo.org.

South Coast Geological Society



Monthly dinner meetings are typically the first Monday of each month. For more information, visit the association website at www.southcoastgeo.org.

AEG—Southern California Chapter

The AEG — Southern California Chapter typically meets the second Wednesday of each month at Victorio's Ristorante in North Hollywood. For more information, visit the association website at www.aegsc.org.



AEG—Inland Empire Chapter

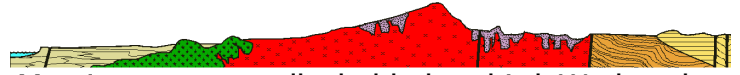
The AEG — Inland Empire Chapter typically meets the third Wednesday of each month at Pinnacle Peak Steakhouse, 2533 S. La Cadena Drive, Colton. For more information, visit the association website at www.aegsc.org/chapters/inlandempire.



Rock & Gem Shows—various locations

Various rock and mineral shows will be held throughout southern California. To find one near you, visit www.rockngem.com, then select the Show Dates tab.

San Diego Association of Geologists



Meetings are usually held the third Wednesday evening of each month.

For more information, visit the association website at www.sandiegogeologists.org.

Los Angeles Basin Geological Society



Monthly lunch meetings are typically the 4th Thursday of each month from 11:30 am to 1:00 pm at the Willow Street Conference Center, 4101 E. Willow Street, Long Beach. For more information, visit the association website at www.labgs.org.

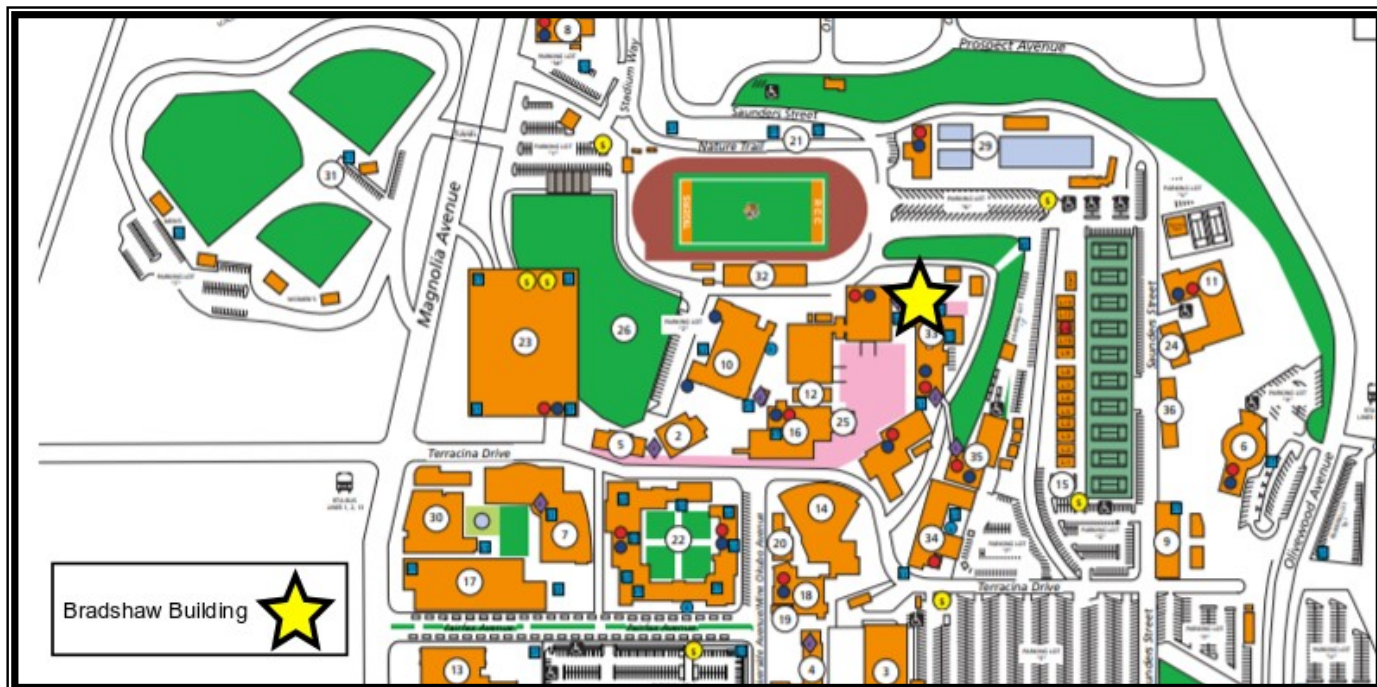
Get Your IGS Coffee Mug!

IGS coffee mugs are available at the monthly meetings for \$10. Get yours at the upcoming meeting!



IGS MEETING LOCATION:

Riverside City College
 4800 Magnolia Avenue
 Riverside, California 92506

**IGS OFFICERS****President**

Jessie Bagby
 Colorado River Basin RWQCB
jessie.p.bagby@gmail.com
 951.551.7804

Treasurer

Margaret Gooding
mgooding@roadrunner.com
 909.434.5377

Newsletter Editor

Hunter Steinmuller
 UCR Undergraduate Student
hunter.steinmuller@yahoo.com

Vice President

Jeff Fitzsimmons
 Lahontan RWQCB
geojeff08@att.net
 951.212.5018

Secretary

Shanna Delgado
 Project Analyst
geoshanna16@gmail.com

Web Master

Lance Pompe
lpome@llu.edu

Membership Chairman

Albino Esparza
IGS.Membershipchair@gmail.com
 (909)471-1791