

Inland Geological Society

September 2025

Next Meeting:

**Tuesday,
Sept. 9th**

Time:

**Social: 6:00pm
Dinner 6:15pm
Presentation:
7:00pm**

Location:

**3 Iron
Brewing Company
898 South Via Lata,
Suite A
Colton, CA 92324**

Coming to Dinner?

**Students \$10
IGS Members \$12
Non-Members \$15
Please RSVP by
Sept. 5th to:**

rsvp.igs@gmail.com

Newsletter of the Inland Geological Society Volume 37 No. 7

In this issue:

- September Speaker: Francesca Rodriguez 1-2
- Announcements 2
- IGS Meeting Schedule 2
- Meeting Location & Current IGS Officers..... 3

Speaker: Francesca Rodriguez, Engineering Geologist
California Geological Survey
Los Angeles, CA

"Who We Are and What We Do: The California Geological Survey Programs and Resources"

Abstract:

The California Geological Survey is comprised of various programs that cover the vast geology, economic resources, and geologic hazards present across the State. This presentation will shed light on the various programs at CGS, our products, resources, and their applications.

Speaker Biography:

Francesca Rodriguez obtained her B.S. in Geology at Colorado State University and spent 4.5 years in geotechnical consulting in the Greater Los Angeles region. She joined the California Geological Survey in 2019, as an Engineering Geologist in the Geologic Mapping Unit of the Regional Geologic and Landslide Mapping Program at CGS. She has authored and contributed to the geologic mapping of 7 published 7.5-Minute Quadrangle maps, participated in emergency response events (like the Ridgecrest Earthquake and Post-Wildfire hazard evaluations), is involved with the CGS Outreach and Engagement committee, and reviews geotechnical reports for schools as part the Essential Facilities Review Unit in the Seismic Hazards Program.

California Geological Survey Resources and Links

[CGS Information Warehouse \(ca.gov\)](#)

This website is a great resource to access information from the Geological Survey regarding our Regulatory Maps, Landslides, Mineral Land Classification, Tsunami Hazard Areas, and Borehole Database.

[Earthquake Zones of Required Investigation \(ca.gov\)](#)

The California Earthquake Hazards Zone Application ("EQ Zapp") is an online map that allows anyone with a computer, tablet or smartphone to conveniently check whether a property is in an earthquake hazard zone.

Earthquake hazard zones define areas subject to three distinct types of geologic ground failures:

1. fault rupture, where the surface of the earth breaks along a fault
2. liquefaction, in which the soil temporarily turns to quicksand and cannot support structures
3. earthquake-induced landslides

[The California Seismic Hazards Program](#)

The Seismic Hazards Program delineates areas prone to ground failure and other earthquake-related hazards including soil liquefaction (the failure of water-saturated soil), earthquake-induced landslides, surface fault rupture, and tsunami inundation. Cities and counties are required to use these maps in their land-use planning and building permit processes so that these hazards are identified and mitigated for development projects prior to the next major earthquake. Additionally, the program reviews and provides comments on geologic and seismic hazards that apply directly to the design and construction of essential and critical facilities around the state. These facilities include schools, hospitals, nuclear power plants, hazardous waste repositories, and others, typically under contract to other state agencies. The program compiles information about past earthquakes, the potential for earthquakes on major faults, and rates of deformation across California to estimate the potential for future earthquakes. The Seismic Hazards Program works closely with the U.S. Geological Survey to produce earthquake shaking maps that are used in development of building codes and in earthquake damage and loss estimates.

[California Strong Motion Instrumentation Program](#)

The California Strong Motion Instrumentation Program (CSMIP) in the Department of Conservation's California Geological Survey was established in 1972 to obtain vital earthquake data for the engineering and scientific communities through a statewide network of strong motion instruments.

The information gathered by CSMIP is processed and disseminated to seismologists, engineers, building officials, local governments and emergency response personnel throughout the state. The data is used to develop recommended changes to seismic provisions of building codes, to assist local governments in their general plan process and to aid emergency response personnel in the event of a disaster.

[Mineral Hazards of California](#)

The CGS Mineral Resources Program (MRP) provides data about California's varied non-fuel mineral resources (such as metals and industrial minerals), mineral hazards (such as radon, mercury, and naturally occurring asbestos), and information about active and historic mining activities throughout the state. The MRP divides its efforts primarily into two areas: Mineral Resources, and Mineral Hazards. We share our reports and maps with government agencies, universities, libraries, and the public.

[About the CGS Forest and Watershed Geology Program](#)

The CGS Forest and Watershed Geology Program (FWGP) provides technical information and advice about erosion, sedimentation, landslides, and other geologic hazards on California's forested lands and in watersheds where land-use decisions may affect water quality and fish habitat.

California Geological Survey Resources and Links (Continued)**Landslides**

The California Geological Survey produces [landslide inventories](#) across the State and manages the "[Reported California Landslide Database](#)" interactive map.

About the CGS Forest and Watershed Geology Program

The CGS Forest and Watershed Geology Program (FWGP) provides technical information and advice about erosion, sedimentation, landslides, and other geologic hazards on California's forested lands and in watersheds where land-use decisions may affect water quality and fish habitat.

Burned Watershed Geohazards

The Burned Watershed Geohazards (BWG) program helps California communities prepare before and after wildfire by providing maps, data, and rapid burned watershed assessments

ANNOUNCEMENTS:

The Inland Geological Society will meet the second Tuesday of each month at:

3 Iron Brewing Company

898 South Via Lata , Suite A

Colton, California 92324

(<https://www.3ironbrewingco.com>)

Our next meeting is scheduled for Tuesday, October 14, 2025.

Visit our:

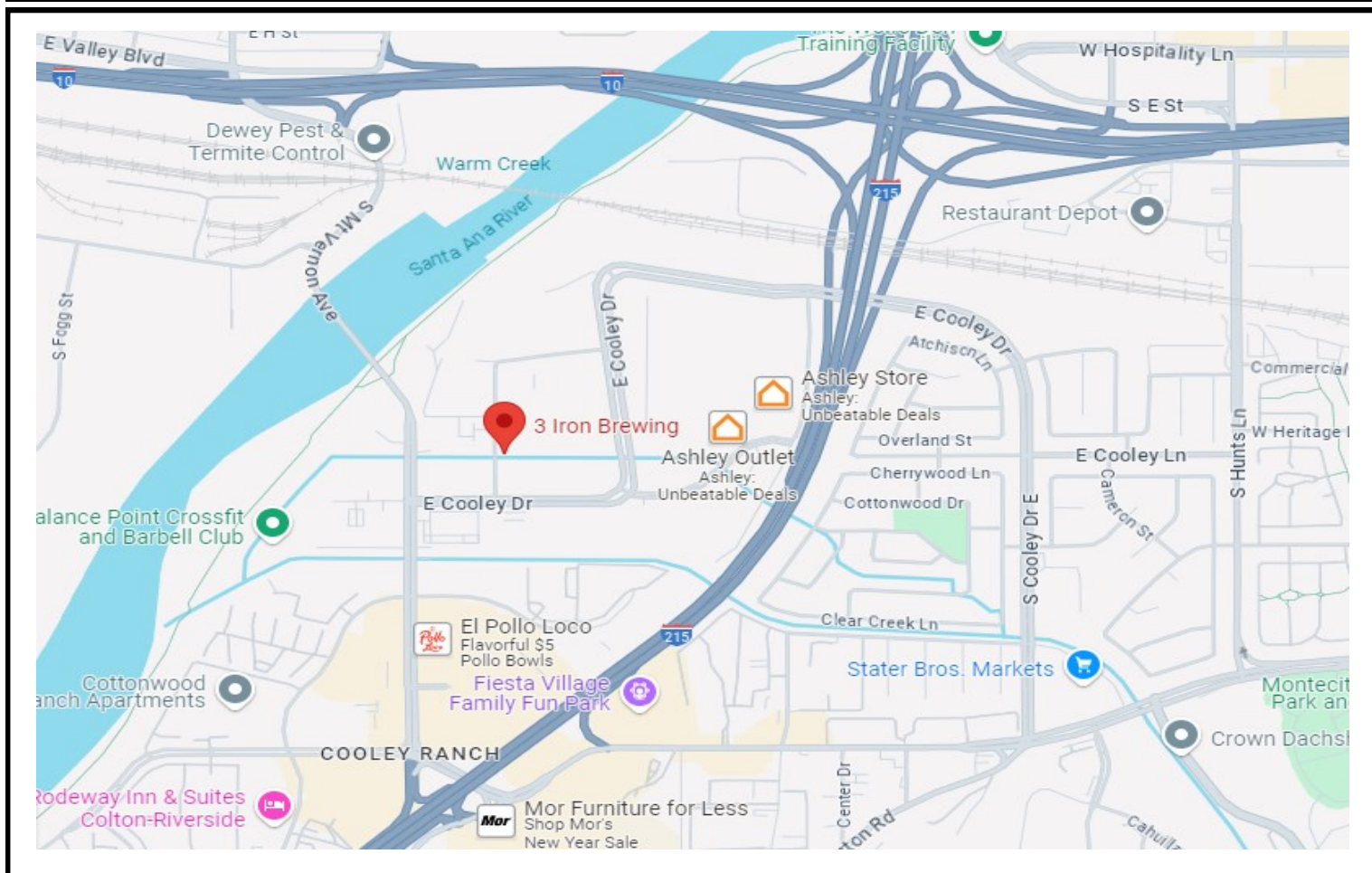
- Webpage at <https://www.inlandgeo.org/>.
- Facebook Page at <https://www.facebook.com/groups/InlandGeo/>.

IGS coffee mugs are available at the monthly meetings for \$10. Get yours at the upcoming meeting!





898 South Via Lata , Suite A
Colton, California 92324
(<https://www.3ironbrewingco.com>)



IGS OFFICERS

President

Jessie Del Mastro
Colorado River Basin RWQCB
jessie.p.bagby@gmail.com
951.551.7804

Vice President

Dylan Terry
CSU, San Bernardino
dylanterry.igs@gmail.com
909.435.5165

Web Master

Lance Pompe
lpome@llu.edu

Treasurer

Margaret Gooding
mgooding@roadrunner.com
909.434.5377

Secretary

Shanna Delgado
Project Analyst
geoshanna16@gmail.com

Membership Chair (Acting)

Silvia Flores
flores.silvia.spf@gmail.com
909.904.0785

Newsletter Editor

Jeff Fitzsimmons
Colorado River Basin RWQCB
geojeff08@att.net
951.212.5018