

Inland Geological Society

February 2026

Next Meeting:

**Tuesday,
February 3rd**

Time:

Social: 6:00pm

Dinner 6:15pm

Presentation:
7:00pm

Location:

3 Iron
Brewing Company
898 South Via Lata,
Suite A
Colton, CA 92324

Coming to Dinner?

Students \$10
IGS Members \$12
Non-Members \$15
Please RSVP by
January 30th to:

rsvp.igs@gmail.com

Newsletter of the Inland Geological Society Volume 38 No. 2

In this issue:

February Speaker: Dr. Claire Todd	1-2
• Announcements / Upcoming Events	2
• IGS Meeting Schedule	2
• Meeting Location & Current IGS Officers.....	3

February Speaker: Dr. Claire Todd
Chair of the [Department of Geological Sciences](#)
California State University San Bernardino

"Tracking Ice Sheet Retreat Using Cosmogenic Nuclides "

Abstract:

Ice sheet retreat reveals underlying bedrock and strands glacially transported rock, exposing these geologic materials to the cosmic ray flux. Geologists use the resulting cosmogenic nuclides in minerals to determine the timing and rate of ice sheet retreat. Studies across Antarctica reveal a range of ice sheet thinning rates over millennia and provide a valuable comparison to measurements of modern ice sheet change. This presentation will provide an overview of this geochronological technique, and share field experiences and results from surface exposure age studies in East and West Antarctica.



Speaker Biography:

Dr. Claire Todd is Professor and Chair of the Department of Geological Sciences at California State University San Bernardino where she works with students to study cryospheric change in Antarctica, California, and the Pacific Northwest. She has completed six deep field seasons in Antarctica.

ANNOUNCEMENTS:

The Inland Geological Society will meet each month at:

3 Iron Brewing Company

898 South Via Lata , Suite A

Colton, California 92324

(<https://www.3ironbrewingco.com>)

Our next meeting is scheduled for Tuesday, March 3, 2026.

Visit our:

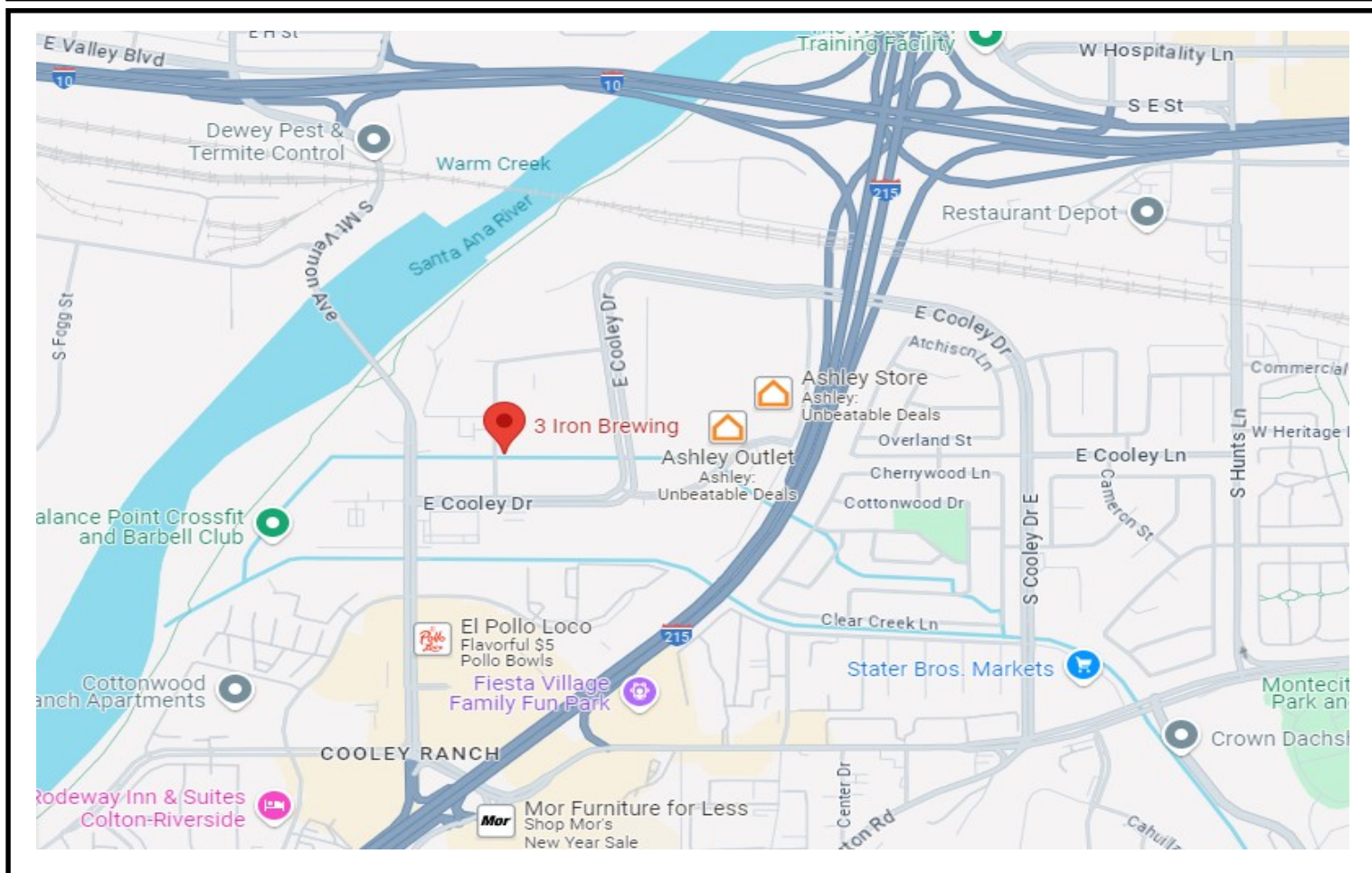
- Webpage at <https://www.inlandgeo.org>.
- Facebook Page at <https://www.facebook.com/groups/InlandGeo/>.

IGS coffee mugs are available at the monthly meetings for \$10. Get yours at the upcoming meeting!



3 Iron Brewing Company

898 South Via Lata , Suite A
Colton, California 92324



IGS OFFICERS

President

Jessie Del Mastro
Colorado River Basin RWQCB
jessie.p.bagby@gmail.com
951.551.7804

Vice President

Dylan Terry
CSU, San Bernardino
dylanterry.igs@gmail.com
909.435.5165

Web Master

Lance Pompe
lpome@llu.edu

Treasurer

Margaret Gooding
mgooding@roadrunner.com
909.434.5377

Secretary

Shanna Delgado
Project Analyst
geoshanna16@gmail.com

Membership Chair

Silvia Flores
flores.silvia.spf@gmail.com
909.904.0785

Newsletter Editor

Jeff Fitzsimmons
Colorado River Basin RWQCB
geojeff08@att.net
951.212.5018