

# Inland Geological Society

May 2019

## Next Meeting:

**Thursday,  
May 9th**

### Time:

**Social: 6:00pm  
Dinner and  
Presentation:  
7:00pm**

### Location:

**Dave & Buster's  
Conference Room**

**4821 Mills Circle  
Ontario, CA 91764**

### Coming to Dinner?

**Please RSVP to  
Nicolette Grill**

**@**

**iron-**

**mtn2012@gmail.com  
by May 1st**

### COST:

**RSVP -**

**Professional \$35**

**Students \$10**

**At door -**

**Professional \$40**

**Students \$20**

## Newsletter of the Inland Geological Society

Volume 35 No. 5

### In this issue:

- May Speaker: Jennifer Baar ..... 1-2
- Announcements / Upcoming Events ..... 2-4
- Employment Opportunities..... 4
- IGS Meeting Schedule ..... 6
- Meeting Location & Current IGS Officers..... 7



Join us on Thursday, May 9th for a special joint meeting between IGS, SME, and AEG. **Please note that the meeting location and email to RSVP are different for this meeting.**



### May Speaker:

**Jennifer Baar, SME Henry Krumb Lecturer**

### Abstract:

**"Ore Control in the Modern Mining Era – Are We Doing Enough?"**

Ore control is an important player in the success of a mine. Ore control geologists and/or engineers maximize the economic metal value of a mine. Without a dedicated role committed to the success and progress of an ore control program, it is unlikely a program will be able to stay current on industry-leading trends in technology and best practices. With the mining industry rapidly changing around us, it would appear ore control is being left in the dust. Many of the practices used today are decades-old and have not been revisited in many years. Ore control should be used for more than just a tool to delineate ore and waste. It should be used to assist in short-range mine design, development drilling, metallurgical and material designation, and blast-pattern design, among other purposes. How do we prevent ore control and the people who run the program from becoming obsolete in an ever-changing industry?

**Speaker Biography:**

Jennifer Baar, Ore Control Geologist for Rio Tinto, received her BS in Geology from the University of Georgia. She briefly worked in the Environmental Sector until she returned to school for her MSc in Geology from Washington State University. In 2010, she began working full-time for the mining industry with an underground focus in Elko, Nevada, with Newmont Mining Corporation, and later at Barrick Gold Corporation. During her time in the gold industry, she focused primarily on Carlin Style Gold Mineralization in both the Carlin and Eureka-Cortez Trends. In 2015, she moved to an open pit geology role. Currently, she works for Rio Tinto at Bingham Canyon as an ore control geologist.

**Check out IGS's Facebook Page at**  
**<https://www.facebook.com/groups/InlandGeo/>**

Contact Margaret Gooding at  
at [mgooding@roadrunner.com](mailto:mgooding@roadrunner.com) to join.

**ANNOUNCEMENTS AND EVENTS:****Certified Hydrogeologist (CHG) Occupational Analysis Survey**

On March 4, 2019, the Board for Professional Engineers, Land Surveyors and Geologists (the Board) initiated the occupational analysis survey that will be used to update the content of the Certified Hydrogeologist (CHG) license examination. The Board needs a minimum of 200 CHGs to complete the survey in order to have sufficient data to update the examination. The survey will take approximately 45 minutes to complete and must be completed by April 30, 2019.

Please note that you may have participated in another recent occupational analysis survey that the Board conducted for the California Specific Examination (CSE) used for the Professional Geologist license, or the CEG occupational survey used to update the Certified Engineering Geologist license exam. Each licensing examination administered by the Board requires its own occupational analysis. For those of you who completed our previous surveys for the CSE or CEG, we thank you.

For those persons who hold the Certified Hydrogeologist title authority license, we also request that you also take the time to complete this most recent occupational analysis survey for the CHG examination as soon as possible.

The link to complete the survey is posted to the home page of our website ([www.bpelsg.ca.gov](http://www.bpelsg.ca.gov)) under

Plan ahead for the **Geological Society of Nevada's 2020 Symposium, *Vision for Discovery: Geology and Ore Deposits of the Basin and Range***, scheduled for May 12-24, 2020, at the Nugget Casino Resort in Sparks, Nevada. Abstract submittal will open soon! For more information, visit the organization's website at <http://www.gsnv.org/2020-symposium/>.

**BPELSG Announcement:**

On November 30, 2018 the California Board for Professional Engineers, Land Surveyors, and Geologists (Board) published the Geology Education Rulemaking Notice. The Board proposes to adopt Title 16, California Code of Regulations sections 3022, 3022.1, 3022.2, and amend Title 16, California Code of Regulations section 3031.

Please visit our webpage to view the Initial Statement of Reasons and the proposed text. [https://www.bpelsg.ca.gov/about\\_us/rulemaking.shtml](https://www.bpelsg.ca.gov/about_us/rulemaking.shtml) Comments from you are very important. Comments regarding suggested changes as well as comments indicating areas of agreement are equally important to the process. Instructions for providing comments are included with the public notice.

Dear Colleagues:

I am pleased to announce the completions of the Fall 2018 Cooperative Well Measuring Program.

This season we have requested data from 81 water agencies from the Upper Santa Ana, San Jacinto and western Whitewater River Watersheds.

5,198 well are in the spreadsheet  
2,447 are considered "active"  
2,751 are considered "closed" and assumed abandoned

I received 1,423 reported water levels (excluding a good number reported as dry)

A large number of these wells (active and closed) have data back to 1993 on this spreadsheet and data back to the Spring 1964 is available in interesting formats.

If you would like a copy of this years report, I am holding the subscription fee at \$150 for this seasons work.

Many of you know I am now semi-retired, points to anyone who can find Grenada California, so your continued support of this semi-annual report keeps me willing to keep slugging thru pages of water levels in various formats :)

If you have any questions, please give me a call!

THANKS!

Steven E. Mains  
Watermaster Support Services

[watermains@aol.com](mailto:watermains@aol.com)  
951-201-6571 cell

P.O. Box 250  
Grenada, CA 96038

**AEG 2019 Annual Meeting Call for Abstracts**

The Association of Environmental & Engineering Geologists 2019 Annual Meeting invites you to submit an abstract for publication and presentation at the 67th Annual Meeting in Asheville, North Carolina September 17-22, 2019. Abstract online submittal is now open. The deadline to submit your abstract is May 1, 2019. For complete meeting details and to register, please visit [www.aegannualmeeting.org](http://www.aegannualmeeting.org).

## **Employment Opportunity:**

### **Los Angeles County Public Works are in search of an Engineering Geologist.**

**Job Type:** Full Time  
**Job Number:** C4371P

**MINIMUM REQUIREMENTS:**

A valid California State Certificate of Registration as an Engineering Geologist.\*

**LICENSE:**

A valid California Class C Driver License or the ability to utilize an alternative method of transportation when needed to carry out job-related essential functions.

**PHYSICAL CLASS:**

Physical Class III – Moderate: Includes standing or walking most of the time, with bending, stooping, squatting, twisting, and reaching; includes working on irregular surfaces, occasionally lifting objects weighting over 25 pounds, and frequent lifting of 10-25 pounds.

**Additional Information:**

**EXAMINATION CONTENT**

This examination will consist of an interview covering education, training, experience, work style, and general ability to perform duties of the position weighted 100%.

**Candidates must achieve a passing score of 70% or higher on the interview in order to be placed on the eligible register.**

**ELIGIBILITY INFORMATION**

The names of candidates receiving a passing grade in the examination will be placed on the eligible register in the order of their score group for a period of twelve (12) months following the date of promulgation.

**To access the application or to learn more, please visit the county website:**

<https://www.governmentjobs.com/careers/lacounty/jobs/2336432-0/engineering-geologist>

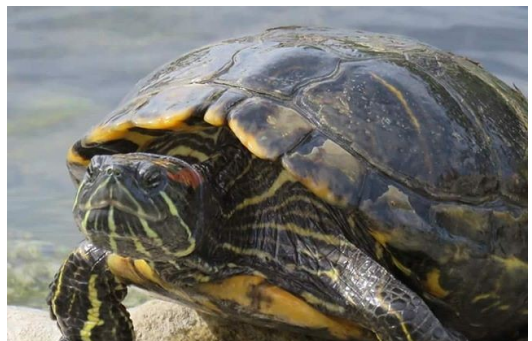
Visit the  
**Jurupa Mountains Discovery Center**  
7621 Granite Hill Drive, Jurupa Valley, California 92509  
951.685.5818

The Jurupa Mountains Discovery Center hosts the Ruth and Sam Kirkby Earth Science Museum, which houses a unique collection of exhibits including the Crestmore Quarry, fluorescent minerals, Indian artifacts, mining exhibits, petrified wood, sea shells, dinosaur exhibits, fossils, rocks and minerals, and many more.

The onsite Granite Hill Nursery stocks a large variety of cacti and succulents, and the gardens showcase mature and unique species over several acres. A collection of butterfly gardens is under construction as part of ongoing Eagle Scout Service Projects. The Center also provides hands-on educational kits for educators, houses a critter corner in the gift shop, and hosts themed toddler times on Friday afternoons.

The Center is always looking for volunteers to assist in the many on-going activities from light construction work to assisting with tours and programs. This is a worthwhile and fulfilling opportunity for scientifically-minded individuals of all ranks, from students through working professionals to retirees. This service will look great on your resume! Please contact Executive Director Wes Andree at 951/685-5818 or [director@jmdc.org](mailto:director@jmdc.org) for further details.

*Visit the website at <https://jmdc.org> to learn more about the Jurupa Mountains Discovery Center!*





## Upcoming Meetings/Events

### Inland Geological Society

In 2019, the Inland Geological Society will meet the first Tuesday or Wednesday of each month. The next meeting is scheduled for Thursday, May 9th. For more information, visit our website at [www.inlandgeo.org](http://www.inlandgeo.org).

### South Coast Geological Society



Monthly dinner meetings are typically the first Monday of each month. This month's meeting is Monday, May 6th. This month's lecture, "Seawater Intrusion Control in Orange County – Do We Need Another Barrier?", will be presented by Roy Herndon, Chief Hydrogeologist at the Orange County Water District. For more information, visit the association website at [www.southcoastgeo.org](http://www.southcoastgeo.org).

### AEG—Southern California Chapter



The AEG — Southern California Chapter typically meets the second Wednesday of each month at Victorio's Ristorante in North Hollywood. The January meeting has not been announced yet. For more information, visit the association website at [www.aegsc.org](http://www.aegsc.org).

### AEG—Inland Empire Chapter

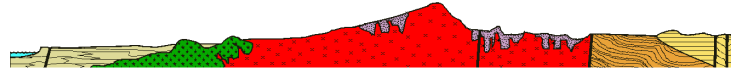


The AEG — Inland Empire Chapter typically meets the third Wednesday of each month at Pinnacle Peak Steakhouse, 2533 S. La Cadena Drive, Colton. The March meeting has not been announced yet. For more information, visit the association website at [www.aegsc.org/chapters/inlandempire](http://www.aegsc.org/chapters/inlandempire).

### Rock & Gem Shows—various locations

Various rock and mineral shows will be held throughout southern California. To find one near you, visit [www.rockngem.com](http://www.rockngem.com), then select the Show Dates tab.

### San Diego Association of Geologists



Meetings are usually held the third Wednesday evening of each month. For more information, visit the association website at [www.sandiegogeologists.org](http://www.sandiegogeologists.org).

### Los Angeles Basin Geological Society

Monthly lunch meetings are typically the 4th Thursday of each month from 11:30 am to 1:00 pm at the Willow Street Conference Center, 4101 E. Willow Street, Long Beach. The January meeting has not been announced yet. For more information, visit the association website at [www.labgs.org](http://www.labgs.org).



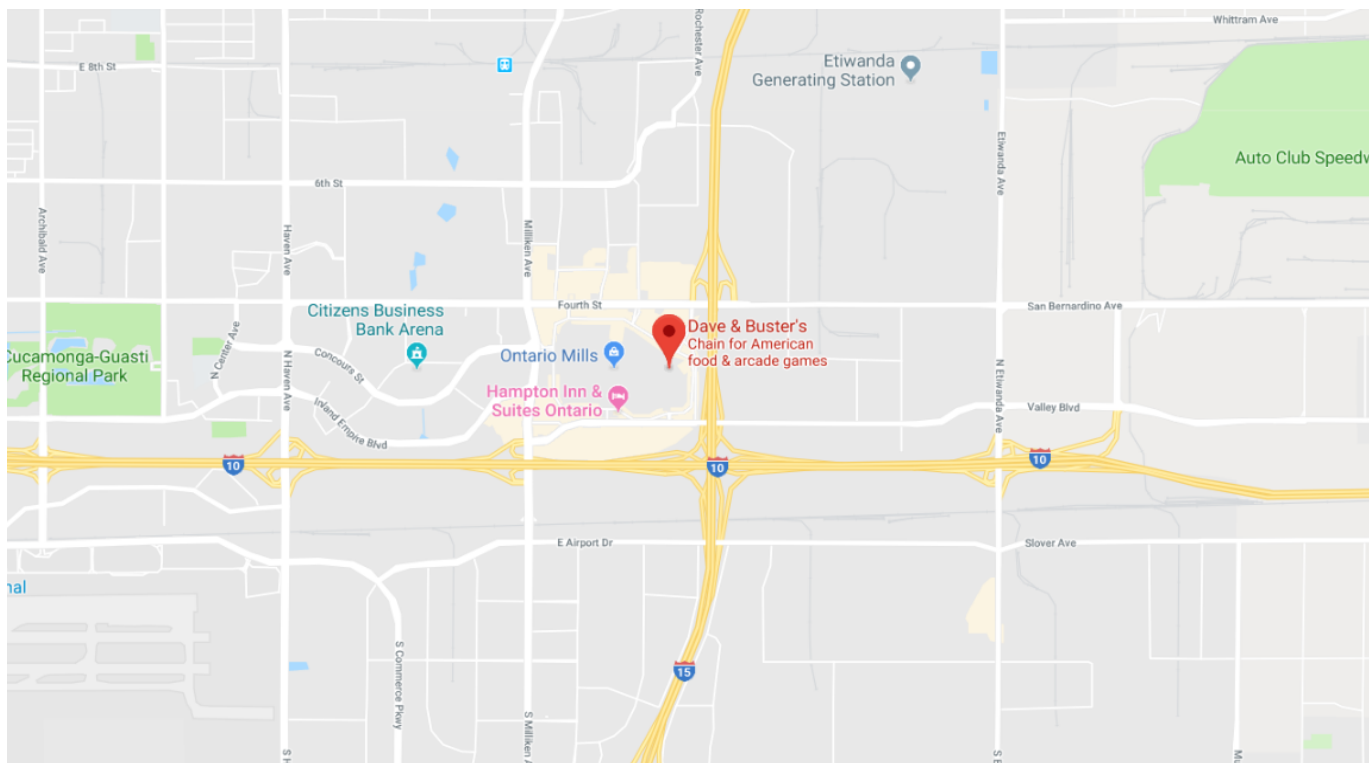
### Get Your IGS Coffee Mug!

IGS coffee mugs are available at the monthly meetings for \$10. Get yours at the upcoming meeting!



**SME / IGS / AEG JOINT MEETING LOCATION:**

**Dave & Buster's Conference Room**  
**4821 Mills Circle**  
**Ontario, CA 91764**

**IGS OFFICERS****President**

Jessie Bagby  
 CSUSB Alumni  
[Jessie.p.bagby@gmail.com](mailto:Jessie.p.bagby@gmail.com)  
 951.551.7804

**Treasurer**

Margaret Gooding  
[mgooding@roadrunner.com](mailto:mgooding@roadrunner.com)  
 909.434.5377

**Newsletter Editor**

Hunter Steinmuller  
 UCR Undergraduate Student  
[hstei002@ucr.edu](mailto:hstei002@ucr.edu)

**Vice President**

Jeff Fitzsimmons  
 Lahontan RWQCB  
[geojeff08@att.net](mailto:geojeff08@att.net)  
 951.212.5018

**Secretary**

Shanna Delgado  
 Project Analyst  
[rsvp.igs@gmail.com](mailto:rsvp.igs@gmail.com)

**Web Master**

Lance Pompe  
[lpome@llu.edu](mailto:lpome@llu.edu)

**Membership Chairman**

Kirby Roucher  
 Independent Contractor  
[inlandgeologicalsociety@gmail.com](mailto:inlandgeologicalsociety@gmail.com)  
 951.522.5318