

Inland Geological Society

May 2025

Newsletter of the Inland Geological Society Volume 37 No. 5

Next Meeting:

**Tuesday,
May 13th**

Time:

**Social: 6:00pm
Dinner 6:15pm
Presentation:
7:00pm**

Location:

**3 Iron
Brewing Company
898 South Via Lata,
Suite A
Colton, CA 92324**

Coming to Dinner?

**Students \$10
IGS Members \$12
Non-Members \$15
Please RSVP by
May 9th to:**

rsvp.igs@gmail.com

In this issue:

- March Speakers: Mark D. Edwards and Patrick F. Lehrman 1-2
- Announcements 2
- IGS Meeting Schedule 2
- Meeting Location & Current IGS Officers 3

**May Speakers: Mark D. Edwards RG (Arizona) and
Patrick F. Lehrmann PG, PGp (California)
Of Advantage Geophysics, Inc.**

"Modern geophysical methods provide standalone data or supplemental data for the interpretation of geologic, groundwater and mineral resources, buried infrastructure, and/or structural conditions"

Abstract:

Advantage Geophysics, Inc. (Advantage) provides professional geologic and geophysical consulting services through non-destructive methods. We strive to ensure that preliminary geophysical exploration can prevent unforeseen and costly complications.

Case Histories: Examples of geophysics for geotechnical, geologic, and environmental projects. Providing Subsurface Information and Reducing Risk":

- HSAMT/MT and Gravity for Well Siting
- HSAMT/MT for Fracture Controlled Well Siting – Moss Mine Gold-Silver Project, Bullhead City, Arizona
- HSAMT/MT for Lithium Brine Exploration in Closed Basins: California and Nevada
- 2-D MASW Seismic for geotechnical projects
- 2-D Refraction Microtremor (ReMi) Shear Wave Profiling for Geotechnical Parameters in California, Arizona, Oregon, Utah and Hawaii
- 1-D ReMi Seismic For IBC Site Class
- Undocumented Landfill Delineation
- Boron Mine ERT Profiles
- 2-D Reflection Seismic for Fault Detection and Groundwater Studies

Speaker Biographies:**Mark D. Edwards, RG (Arizona), PGp (California)**

M.S. Geohydrology, Illinois State University
 B.S. Geology, Oregon State University

Mr. Edwards currently is a Principal Geologist/Geophysicist with Advantage Geophysics, Inc. Mr. Edwards has over 34 years of national and international experience in geophysical and geologic evaluations, geologic resource evaluations, environmental assessments, hydrogeologic evaluations, geologic and geophysical site characterization, environmental remediation, subsurface utility engineering (SUE), and directing geological and geophysical studies for commercial projects, military bases. Many projects have been completed while meeting municipal, state, and federal regulatory requirements. A diverse background and wide variety of project experiences allow him to manage and perform geophysical, environmental, and geotechnical aspects of projects. Projects have included schools, medical facilities, power plants, dams, groundwater resource exploration and well siting, water treatment plants, transportation, commercial and residential properties, solar plants, bridges, tunnels, forensics, mineral resources, open pit mines, and military bases. transportation, commercial and residential properties, solar plants, bridges, tunnels, forensics, mineral resources, open pit mines, and military bases.

Patrick F. Lehrmann, PG, PGp (California), RG (Arizona and Oregon), PG (Missouri)

B.S. Geology University of Wisconsin, Oshkosh

Mr. Lehrmann currently is a Principal Geologist/Geophysicist with Advantage Geophysics, Inc.. Mr. Lehrmann has over 28 years of professional experience, and includes performing geophysical, geotechnical, and environmental evaluations for municipal, commercial, industrial, and military projects. As a Principal Geophysicist, Mr. Lehrmann manages and conducts geophysical field evaluations; including seismic refraction, ground penetrating radar, magnetic, electrical resistivity and electromagnetic studies; and prepares and reviews reports documenting methodologies and findings and presents conclusions and recommendations.

ANNOUNCEMENTS:

The Inland Geological Society will meet the second Tuesday of each month at:

3 Iron Brewing Company

898 South Via Lata , Suite A
 Colton, California 92324

(<https://www.3ironbrewingco.com>)

Our next meeting is scheduled for Tuesday, June 10, 2025.

Visit our:

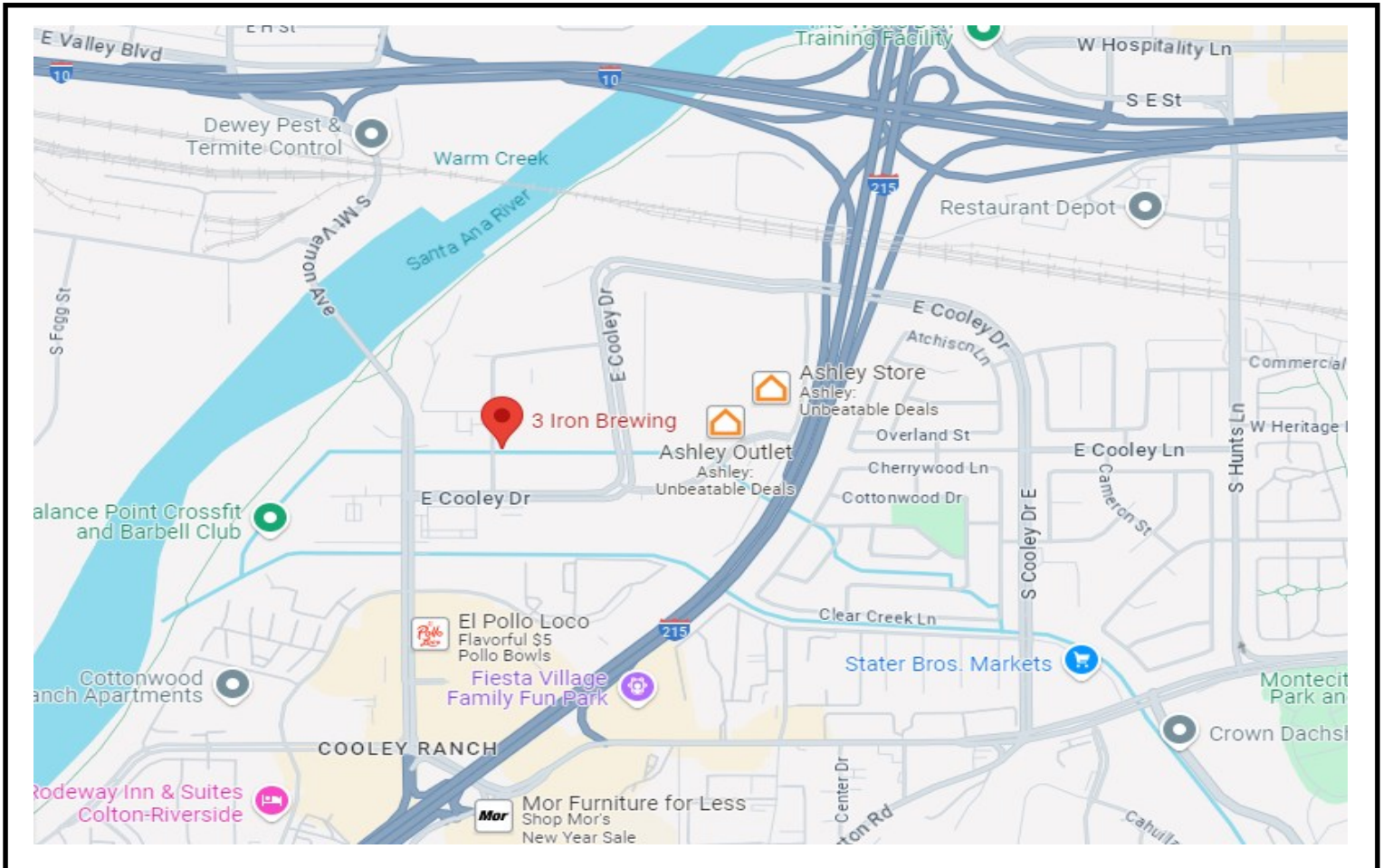
- Webpage at <https://www.inlandgeo.org>.
- Facebook Page at <https://www.facebook.com/groups/InlandGeo/>.
- If you are interested in serving as the Inland Geological Society Membership Chair, please email Margaret Gooding at mgooding@roadrunner.com.



IGS coffee mugs are available at the monthly meetings for \$10. Get yours at the upcoming meeting!



898 South Via Lata , Suite A
Colton, California 92324
(<https://www.3ironbrewingco.com>)



IGS OFFICERS

President

Jessie Del Mastro
Colorado River Basin RWQCB
jessie.p.bagby@gmail.com
951.551.7804

Vice President

Dylan Terry
CSU, San Bernardino
dylanterry.igs@gmail.com
909.435.5165

Web Master

Lance Pompe
lpome@llu.edu

Treasurer

Margaret Gooding
mgooding@roadrunner.com
909.434.5377

Secretary

Shanna Delgado
Project Analyst
geoshanna16@gmail.com

Membership Chair (Acting)

Margaret Gooding
mgooding@roadrunner.com
909.434.5377

Newsletter Editor

Jeff Fitzsimmons
Colorado River Basin RWQCB
geojeff08@att.net
951.212.5018