

Inland Geological Society

May 2026

Meeting:

**Tuesday,
May 5th**

Time:

**Social: 6:00pm
Dinner 6:15pm
Presentation:
7:00pm**

Location:

**3 Iron
Brewing Company
898 South Via Lata,
Suite A
Colton, CA 92324**

Coming to Dinner?

**Students \$10
IGS Members \$12
Non-Members \$15**

**Please RSVP by
May 1st to:**

rsvp.igs@gmail.com

Newsletter of the Inland Geological Society Volume 38 No. 5

In this issue:

- May Speaker: Josh Goodwin, PG, CEG 1-2
- Announcements / Upcoming Events 2
- IGS Meeting Schedule 2
- Meeting Location & Current IGS Officers 3

Speaker: Josh Goodwin, PG, CEG

*Senior Registrar for Geology and Geophysics
California Board for Professional Engineers, Land Surveyors, and Geologists*

**"Understanding geology licensure in California:
PG, CEG, CHg, and PGp: How to apply, serve as a
reference, and avoid common violations."**

Abstract:

The presentation will provide valuable information for geologists seeking licensure and will assist current licensees acting as references for applicants.

The talk will cover various topics including, what "responsible charge" means for geologists, common violations of the Business and Professions Code, and give an overview of the online application and renewal Process through the BPELSG Connect system.

We will discuss California's requirements for the Professional Geologist (PG) license and Geologist in Training (GIT) certificate, including a summary of education requirements and properly documenting qualifying work experience.

We will also review the requirements for the engineering geology (CEG) and hydrogeology (CHg) certifications, and the Professional Geophysicist (PGp) license. Finally, bring any burning questions you may have regarding licensing authority and the Board's view on all topics related to the practice.



Speaker Biography:

Josh Goodwin, PG, CEG, is the Senior Registrar for Geology and Geophysics at the California Board for Professional Engineers, Land Surveyors, and Geologists (BPELSG or the Board). His 25 years of experience includes working as a consultant practicing environmental and engineering geology, working for the Division of Mine Reclamation evaluating slope stability and water quality, and working as a Senior Engineering Geologist for the California Geological Survey, overseeing mapping projects for construction aggregate, critical minerals, naturally occurring asbestos, and geological sources of radon.

ANNOUNCEMENTS:

We ask that anyone that wishes to attend the IGS meeting and would like to have dinner provided, to **PLEASE RSVP**. Those that have **NOT** RSVP'd will be offered dinner after all those that have RSVP'd have been served, and if any food remains.

The Inland Geological Society will meet the first Tuesday of each month at:

3 Iron Brewing Company

898 South Via Lata , Suite A
Colton, California 92324

(<https://www.3ironbrewingco.com>)

Our next meeting is scheduled for Tuesday, June 2, 2026.

Visit our:

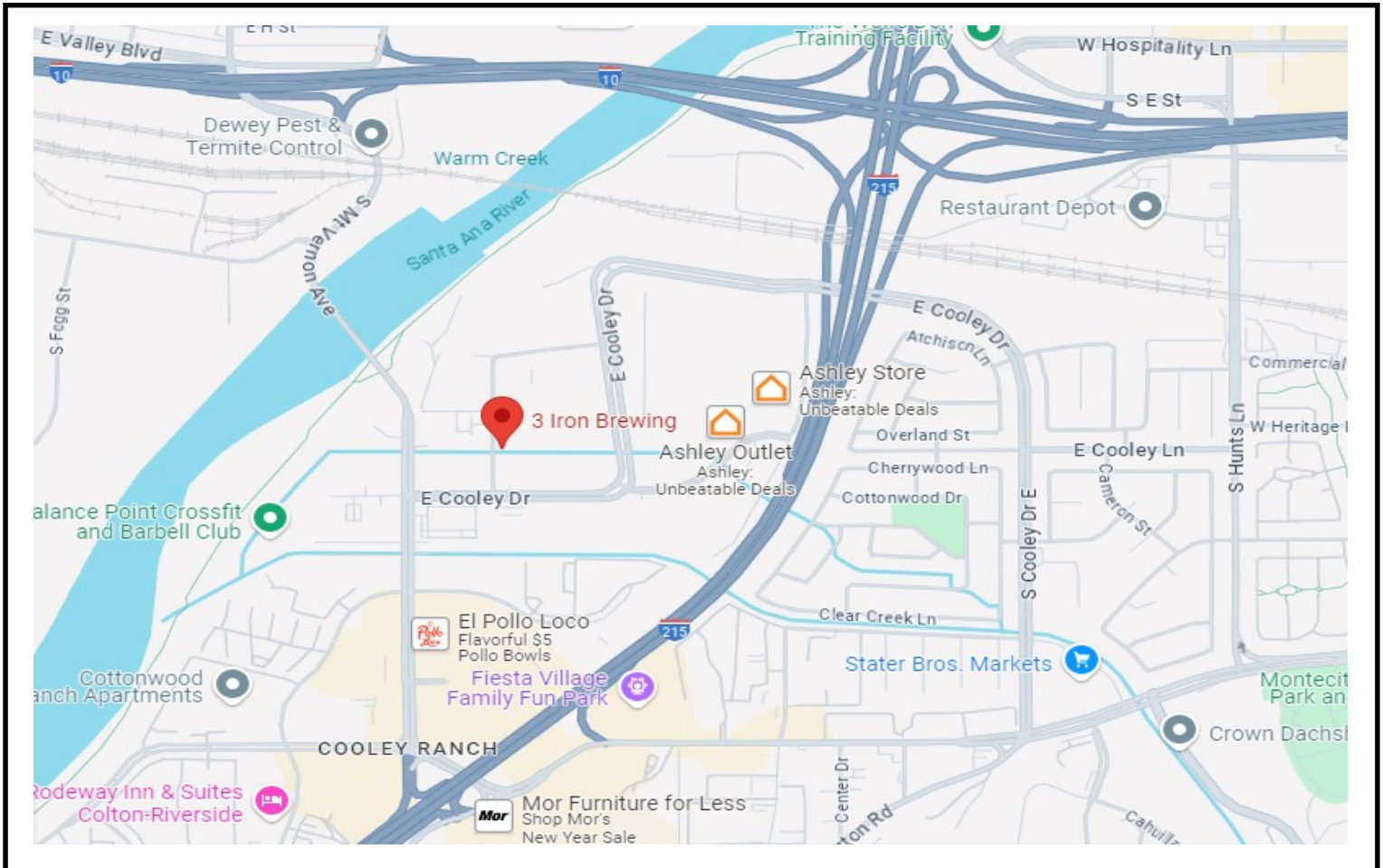
- Webpage at <https://www.inlandgeo.org>.
- Facebook Page at <https://www.facebook.com/groups/InlandGeo/>.
- Instagram at <https://www.instagram.com/inlandgeosociety>



IGS coffee mugs are available at the monthly meetings for \$10. Get yours at the upcoming meeting!

3 Iron Brewing Company

898 South Via Lata , Suite A
Colton, California 92324



IGS OFFICERS

President

Jessie Del Mastro
Santa Ana RWQCB
jessie.p.bagby@gmail.com
951.551.7804

Vice President (Acting)

Shanna Delgado
Project Analyst
geoshanna16@gmail.com

Web Master

Lance Pompe
lpome@llu.edu

Treasurer

Margaret Gooding
mgooding@roadrunner.com
909.434.5377

Secretary

Shanna Delgado
Project Analyst
geoshanna16@gmail.com

Membership Chair

Silvia Flores
flores.silvia.spf@gamail.com
909.904.0785

Newsletter Editor

Jeff Fitzsimmons
Colorado River Basin RWQCB
geojeff08@att.net
951.212.5018